



LIVERPOOL
WATERS

No. 10 PRINCES DOCK

PART GROUND
AND PART 3RD FLOOR
FLEXIBLE OFFICE SPACE

 **Peel L&P**
REALISING POSSIBILITY



LIVERPOOL



The Liverpool City Region is attracting inward investment and international business.

With new restaurants, bars and legendary nightlife, alongside waterfront and cultural attractions, this is a place where people want to live, work and play. Benefiting from beautiful coastline and countryside, quality of life matters here.

 **£10 BILLION** investment planned in the City Region

 **GVA TO DOUBLE** to £1.75 billion by 2030

 **WORKFORCE** 6 million within an hour

 **2 MAJOR AIRPORTS** within 45 minutes' drive

 **4 UNIVERSITIES** and over 213,000 students

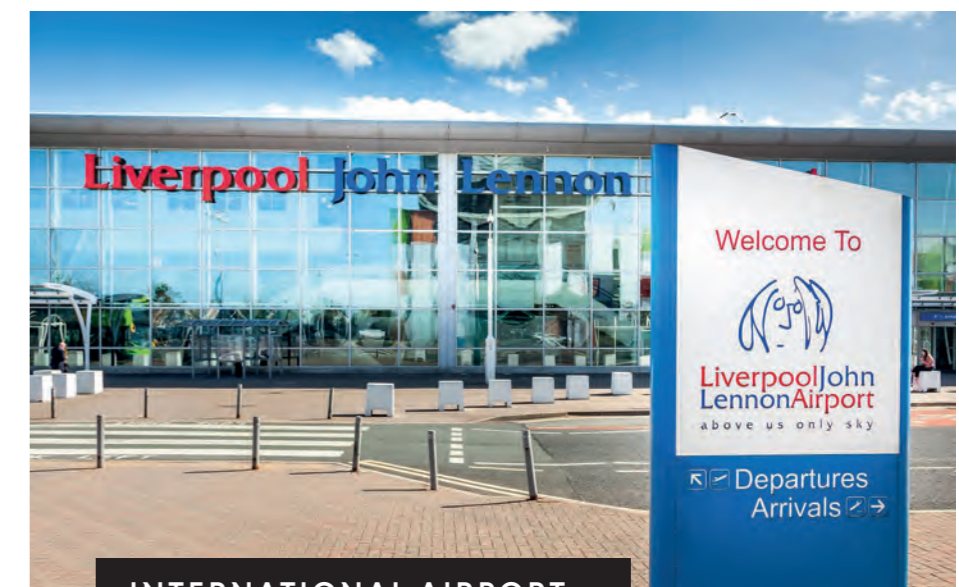
 **DIRECT TRAINS** to London and Manchester



WORLD-CLASS ENTERTAINMENT

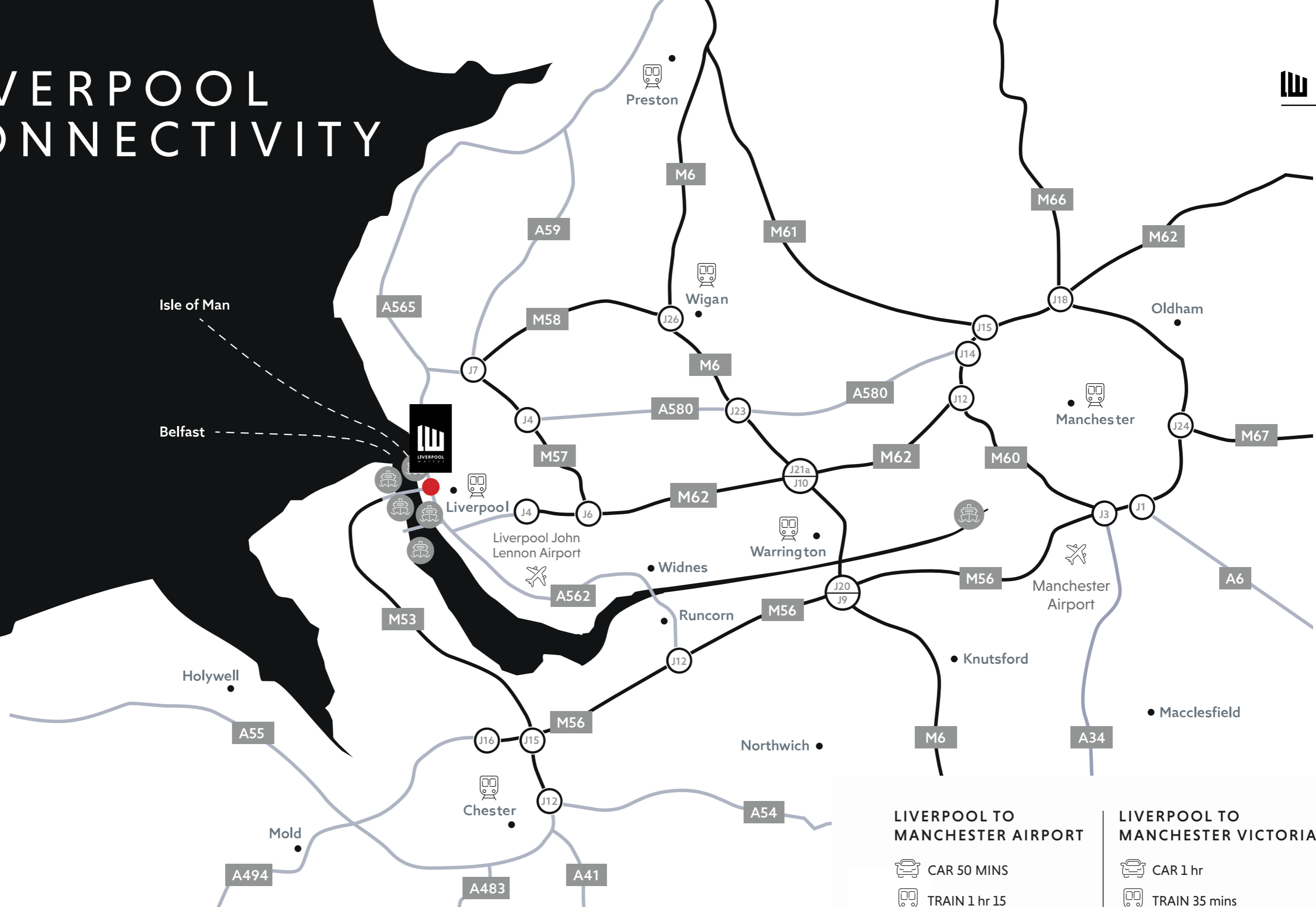


4 UNIVERSITIES



INTERNATIONAL AIRPORT

LIVERPOOL CONNECTIVITY



<p>LIVERPOOL TO MANCHESTER AIRPORT</p> <p> CAR 50 MINS</p> <p> TRAIN 1 hr 15</p>	<p>LIVERPOOL TO MANCHESTER VICTORIA</p> <p> CAR 1 hr</p> <p> TRAIN 35 mins</p>
<p>LIVERPOOL TO JOHN LENNON AIRPORT</p> <p> CAR 25 MINS</p> <p> TRAIN 50 MINS</p>	<p>LIVERPOOL TO LONDON</p> <p> CAR 4 hr 20</p> <p> TRAIN 2 hr 30</p>

LIVERPOOL WATERS

With an estimated value of £5 billion, Liverpool Waters is one of the largest regeneration projects within Europe and the largest single development opportunity in the city.

Covering some 60 hectares and spanning 2.3 km of the city's famous waterfront, Liverpool Waters will see the creation of a new mixed-use city district for Liverpool and bring back to life a swathe of historic dockland.



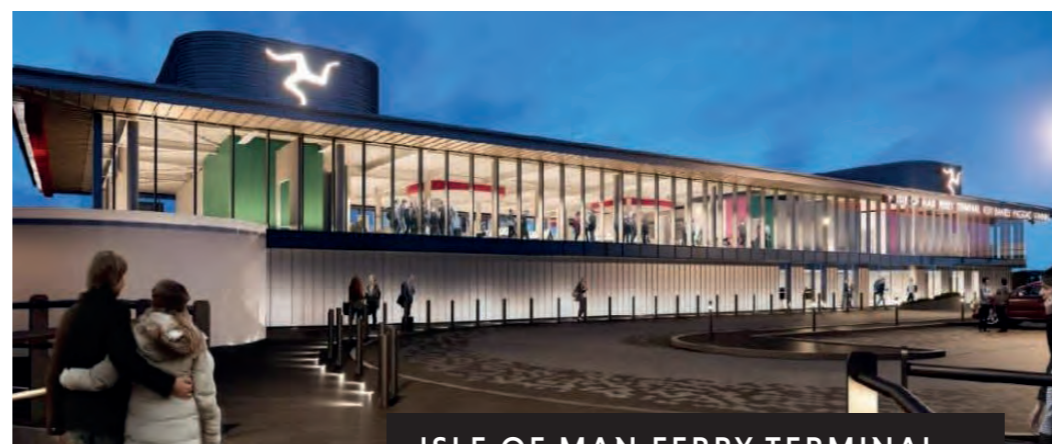
CRUISE LINER TERMINAL



PROPOSED EVERTON STADIUM



PRINCESS DOCK



ISLE OF MAN FERRY TERMINAL



NORTH DOCK



PROGRESS



2,000 people now working within the Liverpool Waters Neighbourhoods.



More than 100 visiting cruise ships planned for 2022, alongside many planned city wide event and waterfront activities at Liverpool Waters.



Over £300m development with Moda Living and Regenda completed and IOM Government Ferry terminal works underway.



Works underway £500m Everton Football stadium to create an iconic international 53,000 seat waterfront stadium.



Detailed planning consent for almost 1,000 apartments which have either completed or are due to commence on site.



Over 200,000 sq ft of completed letting transactions within the existing built office estate.

SUSTAINABILITY



SUSTAINABILITY IS A FUNDAMENTAL CONSIDERATION IN OUR COMMERCIAL DEVELOPMENTS AND WE WORK WITH OCCUPIERS TO CHAMPION GOOD PRACTICE.

Peel L&P

Liverpool Waters operates an ISO 50001 certified energy management system.




Design stage predicted
EPC rating A

Liverpool Waters is about creating neighbourhoods for the future, considering the environmental impact today for the place of tomorrow. With access to nature at its heart, Liverpool Waters is creating wellness through green travel whilst promoting health activity by connecting communities to waterways and nature. We care about the places we create.

- Magnificent views across the River Mersey and beyond
- Easy access to high quality public green space
- Residential and office space making full use of natural daylight
- Childcare facility at Princes Dock
- A full range of fitness activities available
- Regular community events and festivals organised across Liverpool Waters
- 5 minute walk to city centre amenities and cultural attractions
- Well-connected by bike, boat and bus
- Delivered three Net Zero Carbon office buildings and develop all new commercial buildings to gain a BREEAM Excellent rating



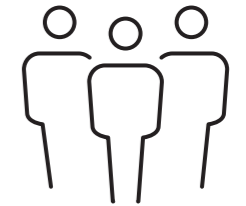
THE THREE PILLARS OF SUSTAINABILITY



ECONOMIC INVESTMENT



ENVIRONMENTAL RESPONSIBILITY



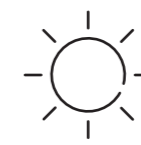
COMMUNITIES



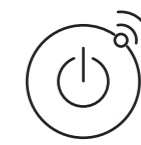
BREEAM rating
'Excellent'



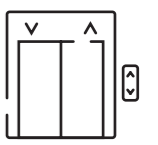
Intelligent lighting
control systems



Solar control
glazing



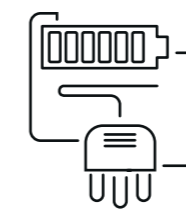
Building energy
management system



Energy efficient
lift technology



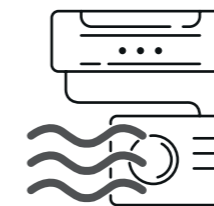
ENERGY SAVING



ENERGY MANAGEMENT



WATER



AIR



MERSEY HEAT NETWORK

DISTRICT HEATING NETWORK AT LIVERPOOL WATERS WILL MAKE USE OF SUSTAINABLE FORMS OF ENERGY INCLUDING GROUND SOURCE, WATER SOURCE AND AIR SOURCE HEATING TO PUMP HOT WATER AROUND THE NEW NEIGHBOURHOODS AS WELL AS THE EXISTING ESTATE.

LIVERPOOL WATERS



COMMERCIAL SPACE

- 1 No. 5 Princes Dock
- 2 No. 8 Princes Dock
- 3 No. 10 Princes Dock
- 4 No. 12 Princes Dock

HOTEL

- 5 Titanic Hotel
- 6 Radisson Blu Hotel
- 7 Mercure Liverpool Atlantic Tower
- 8 Proposed Cruise Liner Terminal Hotel
- 9 Malmaison Hotel
- 10 Crowne Plaza Hotel
- 11 Inside by Melia

TRANSPORT

- 12 Sandhills Train Station
- 13 Moorfields Train Station
- 14 Proposed IoM Ferry Terminal
- 15 Proposed Cruise Liner Terminal
- 16 James Street Train Station
- 17 Princes Dock Multi Storey Car Par
- 18 Isle of Man Ferry Terminal
- 19 Mersey Ferry Terminal
- 20 Temporary Cruise Liner Termina
- 21 Moorfields on Old Hall Street

LEISURE ATTRACTIONS

- 22 Pier Head
- 23 Royal Liver Building
- 24 Anfield
- 25 Goodison Park
- 26 Proposed Everton FC Stadium
- 27 Museum of Liverpool
- 28 Central Dock Park

RESIDENTIAL

- 29 Plaza 1821
- 30 Alexandra Tower
- 31 Quay Central
- 32 Park Central
- 33 The Lexington
- 34 No. 1 Princes Dock
- 35 Waterloo Warehouse

FOOD AND DRINK

- 36 Panoramic 34
- 37 Bean Coffee Shop
- 38 Cargo Restaurant
- 39 Brasco Lounge
- 40 Alchemist
- 41 Matou
- 42 Riva
- 43 Sky Bar
- 44 Mowgli

- 45 Gino D'Acampo
- 46 Rudy's
- 47 San Carlo

AMENITIES

- 48 Holyrood Nursery
- 49 The Store
- 50 Harbour Leisure and Fitness Club

PRINCES DOCK



PRINCES DOCK IS THE FIRST PHASE OF LIVERPOOL WATERS AND IS LOCATED ADJACENT TO THE ICONIC ROYAL LIVER BUILDING WITH PANORAMIC VIEWS ACROSS THE RIVER MERSEY.

PRINCES DOCK IS A WORLD CLASS BUSINESS DESTINATION AND LEISURE COMPLEX, LOCATED IN THE HEART OF THE CITY.



A PLACE TO WORK, LIVE AND THRIVE

A NEIGHBOURHOOD
ROOTED IN HISTORY,
DESIGNED FOR THE
FUTURE



OUTDOOR SWIMMING



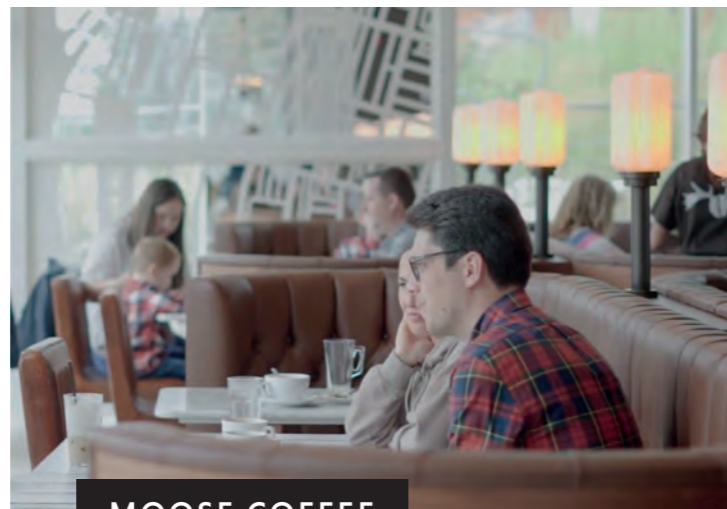
DRAGON BOAT RACE



HARBOUR CLUB



CRUISE TERMINAL



MOOSE COFFEE



INTERNATIONAL
CRUISE LINER
TERMINAL



COFFEE SHOPS
& RESTAURANTS



MULTI-STORY
CAR PARK



HERITAGE WALKS



SCUBA SCHOOL



LEISURE FACILITIES;
INCLUDING
MALMAISON
& CROWNE PLAZA
HOTELS



WELL CONNECTED

Liverpool Waters benefits from an established transport network with many ways to access Princes Dock.



TRAIN

Less than a 10min walk from Moorfields Station. Connecting Merseyrail trains to Wirral, North and South Liverpool, and beyond to Lime Street Station for National rail travel, including London.



CYCLE

2km of cycle routes through the heart of Liverpool Waters and directly connecting to the wider city cycleways and secure facilities in Princes Dock



PARKING

Secure city parking 24/7. At Liverpool Waters you can keep your car close with an array of parking options from contract to pay as you go.



BUS

A dedicated bus station connecting Princes Dock to the wider Merseytravel network.



CAR

Road access from the Strand and 24/7 car parking located next to Princes Dock.



EV CHARGING

Electric vehicle charging point and Voi city electric scooter parking locations.



FOOT

Accessible walkways and riverside routes throughout Princes Dock.

IN GOOD COMPANY



Over 50 local and international businesses already operating in Liverpool Waters:





No. 10 PRINCES DOCK

**No. 10 OFFERS GRADE A OFFICE
ACCOMMODATION
IN A WATERFRONT LOCATION,
WITH STUNNING VIEWS ACROSS
THE RIVER MERSEY.**

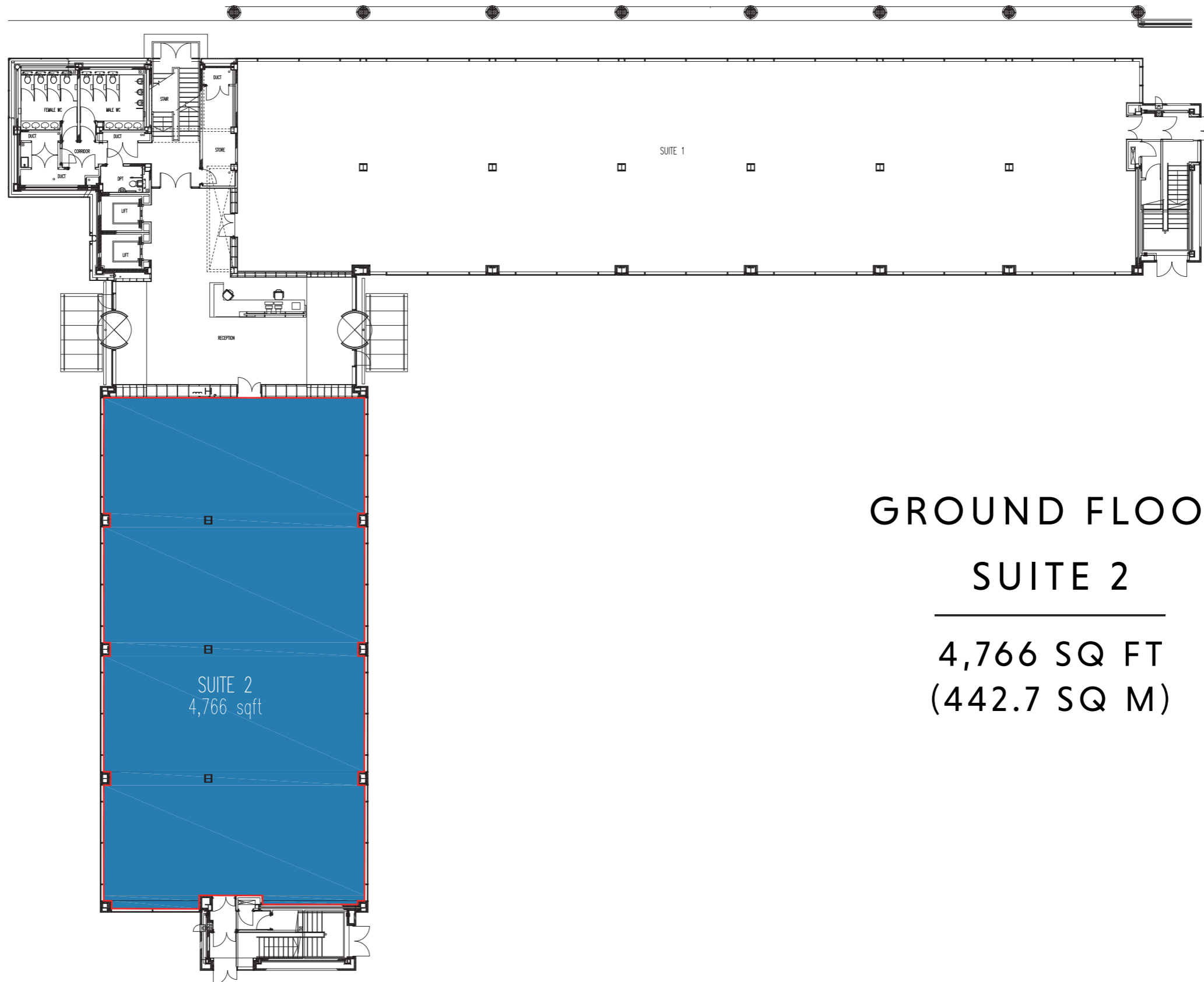
The five-storey building has part glazed elevations and balconies, providing spectacular views of the world famous Pier Head, Royal Liver building and River Mersey.



BUILDING FEATURES AND SPECIFICATION

- Floor to ceiling glazing
- Access control turnstiles
- Fully accessible raised floors (150mm clear Void)
- Suspended ceiling with 1500mm of void space
- LG7 Lighting
- 2 No 13 Person Passenger Lifts
- 4 pipe fan coil air conditioning run by a BMS control system
- A no touch door entry system to all floors
- CCTV surveillance
- Dedicated bicycle racks
- Secure on-site parking at a ratio of 1:573 sq.ft
- Refuse recycling collection service
- Male, female and accessible WC facilities
- 24 Hour security & building manager service
- On-site cleaning service and maintenance
- Bicycle store available at Princes Dock multi-storey car park
- Shower facilities to be installed

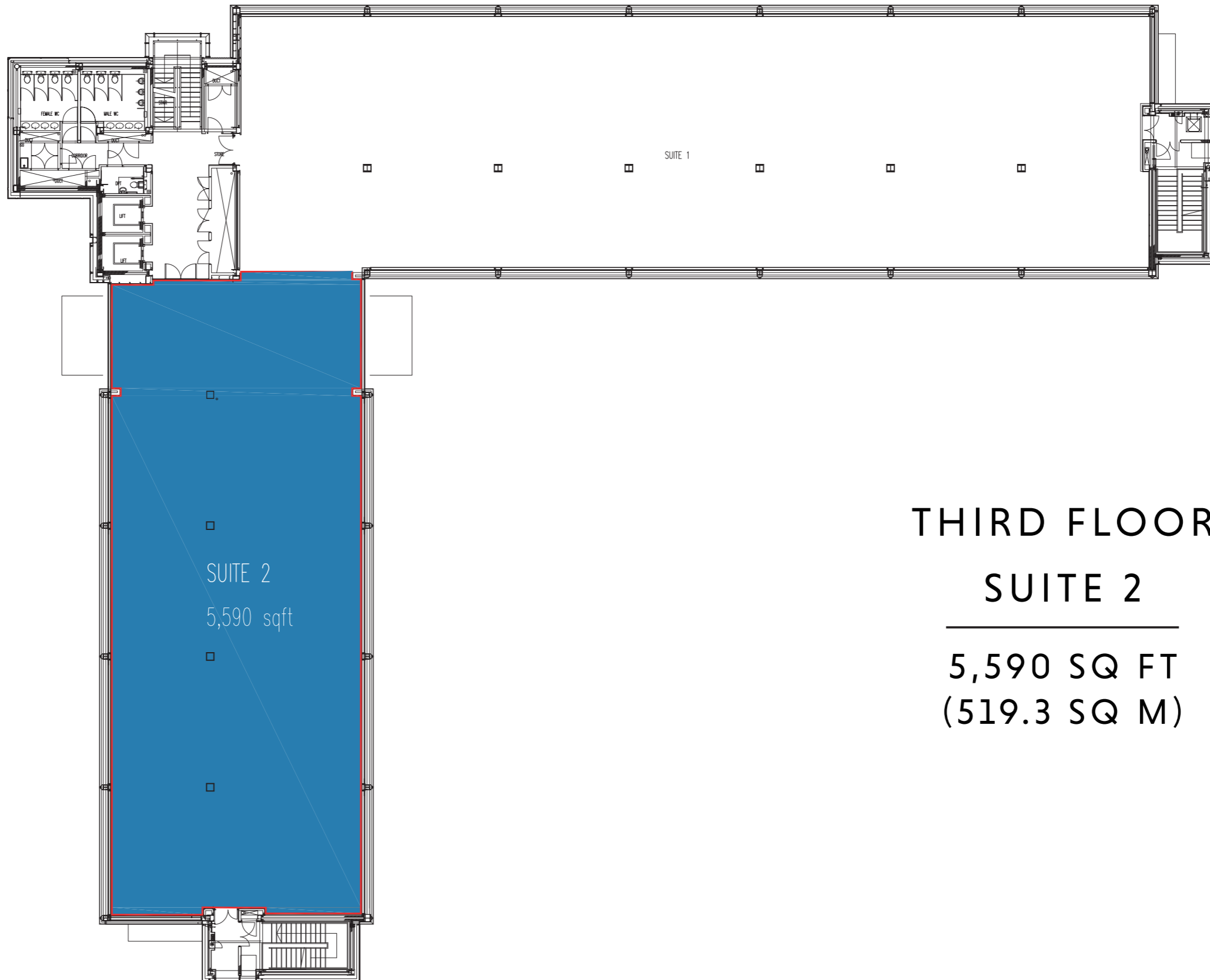
FLOORPLAN



GROUND FLOOR SUITE 2

4,766 SQ FT
(442.7 SQ M)

FLOORPLAN



THIRD FLOOR

SUITE 2

5,590 SQ FT
(519.3 SQ M)

PEEL L&P

We are an ambitious regeneration business with generations of history, heritage and expertise in our DNA. First established in 1971, Peel L&P is now responsible for some of the most transformational development projects in the UK today.

Owning and managing 18 million sq ft of property and 30,000 acres of land and water, our holdings are concentrated in the north west of England but we also own and manage significant assets throughout the UK with a total portfolio value of £2.6 billion.

As a part of the Peel Group; we are integral to a business that strives to make a positive impact on people's lives.

Our legacy matters. We take great pride in the outcomes we achieve, the people we work with, the way we go about our business and the transformational projects we deliver.

Our specialist teams have a proven track record in delivering high-quality, legacy projects across land, property, water and airspace. This includes airports, hotels, waterways, media hubs, event spaces, leisure facilities, retail, workspaces, residential development, industrial and logistical space, public realm, historic gardens and the renewable energy sector.

Peel L&P is an agile and ambitious business with a legacy of success for a long-term, sustainable future.

We see possibility. We deliver transformation.



£2.6bn
gross assets



18m sq ft
property/built estate



30,000
acres of land



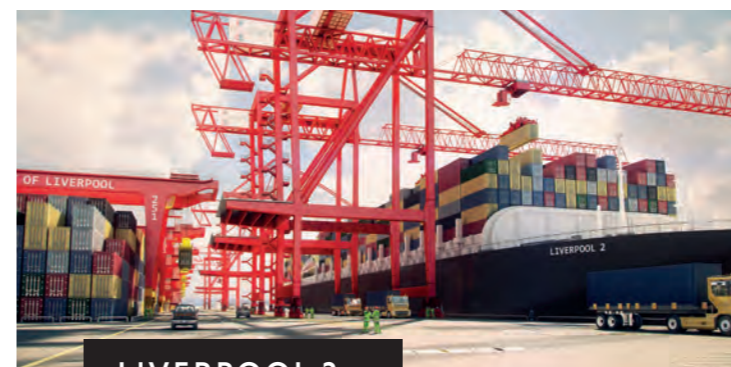
MEDIA CITY UK



THE VIC



WIRRAL WAATERS



LIVERPOOL 2



LIVERPOOL JOHN LENNON



GLOUCESTER QUAYS





LIVERPOOL
WATERS



No. 10 PRINCES DOCK

0151 958 0503

Imarco@peellandp.co.uk

liverpoolwaters.co.uk

Further information is available from:

AVISON
YOUNG

0151 255 1910
avisonyoung.co.uk

ian.steele@avisonyoung.com
remi.smith@avisonyoung.com

WORTHINGTON
OWEN.

0151 230 1130

WORTHINGTONOWEN.COM

mark@worthingtonowen.com
andrew@worthingtonowen.com